

PLEDGE

ONE-TIME:

I/WE DO HEREBY PLEDGE TO CONTRIBUTE \$_____ TO THE
PRENZIE PLAYERS' CAMPAIGN.

INSTALLMENTS:

IT IS MY/OUR EXPECTATION THAT THIS COMMITMENT WILL BE PAID IN
SUMS OF \$_____ A YEAR OVER THE NEXT _____
YEAR(S) (MAXIMUM OF 4 YEARS) BEGINNING _____, 2018,
AND PAYABLE DURING THE MONTHS OF _____.

PRINTED NAME SIGNATURE

PRINTED NAME SIGNATURE

DATE KEEP DONATION ANONYMOUS

ADDRESS

CITY/STATE/ZIP

PHONE/E-MAIL



Scan this QR code or visit
<http://campaign.prenzieplayers.com>
for additional information and to see our
campaign video.

PRENZIE PLAYERS

2322 E KIMBERLY ROAD SUITE 140 | DAVENPORT IA 52807
563-484-4210 | WWW.PRENZIEPLAYERS.COM



Vision

Prenzie Players will finish **performing Shakespeare's entire canon** in the next five years. Only a handful of theater companies worldwide have done so.

We're calling this project **ALL THE WORKS**. It will culminate in our twentieth season and requires Prenzie to stretch its creative and budgetary resources. Many of the remaining plays have never been produced in the Quad Cities – providing a unique opportunity for our audiences and benefactors to be a part of something new.

Not only that...

The final three seasons will run the cycle of history plays from *Edward III* through *Richard III*. Producing these plays in sequence and casting the same actors in the same roles is a task undertaken by **no other theater group** in North America. Your support makes you a part of this history.

Who we are

Prenzie Players is an ever-expanding community theater troupe whose overarching goal is to entertain, educate, and engage the common and not-so-common theater-goer in the Quad Cities.

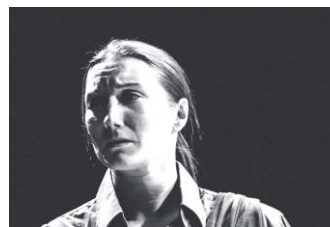
We are known for exceptional, critically acclaimed performances, produced with a modest budget, intimate settings, and small casts. Since 2003, Prenzie has produced forty shows, including twenty-nine Shakespeare plays.



"...wonderfully liquid and ornate language, which is a pleasure to hear delivered by such artful talents."



"The fight scenes are quite impressive as the actors utilize every inch of the multilevel stage."



"King Richard the Second was the most extraordinarily fine time I had at the theatre in 2006."



"The show doesn't just have an emotional pull; it has an erotic pull."



"...there's an encounter so heart-stoppingly strong...the single most effective stage moment I've witnessed all year."

How much there is to do, how little time to do it

Prenzie has begun its sixteenth season, tackling three rarely performed Shakespeare plays. The remaining seasons are a mix of famous and lesser known shows:

Season 16

All's Well that Ends Well

King John

The Two Noble Kinsmen

Season 17

Henry VIII

A Comedy of Errors

Double Falsehood

Season 18 – Seasons of Discontent, p1

Edward III

Richard II

Henry IV (Parts I and II)

Season 19 – Seasons of Discontent, p2

Merry Wives of Windsor

Henry V

Henry VI (Parts I, II, and III)

Season 20 – Seasons of Discontent, p3

Richard III



“...technical brilliance balanced with solid acting.”

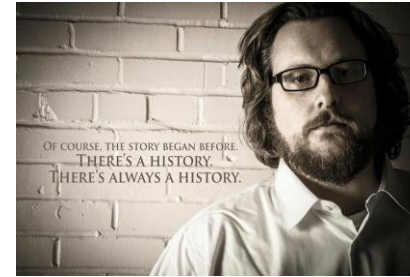
“Seasons of Discontent”

In 2006, Prenzie created the “Henriad”: *Richard II*, *Henry IV*, and *Henry V* with the same actors in the same roles in each play. The “Henriad” was exceptional in Quad Cities theater. Now Prenzie extends this concept to include several additional plays – naming it the “Seasons of Discontent.”

“Eclectic, even ground-breaking staging...”

Remembering our past

When Prenzie Players mounted our first show, a two-evening run of *Measure for Measure*, neither Shakespeare nor classic theater were regularly performed indoors anywhere in the Quad Cities. The first players worried that most of the 40 folding chairs in the art studio performance space would stay empty. To their surprise, 38 of the 40 chairs were filled opening night. The following night, more



than 80 people attended. With no seats for over half of the audience, the players helped people find standing room among sculptures and against paintings. We figured much of the standing audience would leave at intermission, but not a single audience member left. When the show closed, Prenzie’s players realized our brand of economically produced classic theater, which prioritized strict attention to verse and ruthlessly specific emotional nuance, was a welcome addition to the Quad Cities’ theatrical landscape.



Creating opportunities to experience masterpieces of our shared literary and cultural heritage, Prenzie has produced—for the first time in the Quad Cities—Euripides’ *Cyclops*, Calderón’s *Life’s a Dream*, Aphra Behn’s *The Rover*, Thomas Middleton’s *Revenger’s Tragedy*, and Shakespeare’s *Cymbeline*, *Pericles*, *Titus Andronicus*, and *Timon of Athens*. In 2013, Prenzie premiered JC Luxton’s *Bear Girl*. Additionally, Prenzie Players has performed works by Moliere, Edmond Rostand, Jean Anouilh, Christopher Marlowe, and Berthold Brecht.



Performing in all four of the Quad Cities and working with nearly 200 of the region’s exceptional theater artists, Prenzie Players has spent the last 15 years bringing classic theatre wild, alive, and breathing to our audiences, and we remain committed to our mission and community.



Where does Prenzie perform

Since its inception, Prenzie has preferred using ‘found spaces’ for productions, converting unlikely locations into theaters: art galleries, empty storefronts, lecture halls, banquet rooms, a former Masonic lodge, as well as classic theater spaces throughout the Iowa and Illinois Quad Cities area.

Prenzie and the community

Prenzie has worked tirelessly to give back to the community by:

- Running verse acting workshops open to the public, teaching the fundamentals of verse
- Supporting local charities with read-throughs of plays, using members of the public and Prenzie actors
- Teaching stage combat classes
- Visiting classrooms at local high schools to discuss Shakespeare and how the plays’ stories are still relevant
- Partnering with English professors and classes at local colleges and universities

What makes a Prenzie, a Prenzie

All Prenzie’s core actors study John Barton, co-founder of the Royal Shakespeare Company, and bring his genius to each performance. Many have also attended workshops with Andrew Wade, former head of voice with the Royal Shakespeare Company.

“...an end-of-the-first-act visual that is as effective and shocking as it is funny.”



Scale of Commitment

Number of Gifts	In the range of	Total
1	\$10,000	\$10,000
2	\$5,000	\$10,000
5	\$2,500	\$12,500
9	\$1,000	\$9,000
14	\$500	\$7,000
24	\$250	\$6,000
50	\$100	\$5,000
50	\$10	\$500
Campaign	Total	\$60,000



Prenzie Players

- 501(c)(3) tax-exempt non-profit organization
- Performing since March 2003
- Casts actors based on ability without regard to gender, race, ethnicity, or experience
- Committed to engaging and challenging audiences with intimate performances